

@golmar



Simple and powerful!
BY GOLMAR

Configuration Manager 2.1.0.19 Installer Guide



golmar
SISTEMAS DE COMUNICACIÓN, S.A.

C/ Silici 13. Poligon Industrial Famadas
08940 – Cornellà del Llobregat – Spain
www.IPVideoIntercom.com
Telf: 0034-934800696
Mail: golmar@golmar.es

CONTENT

- 1- Introduction.
- 2- System Requirements.
- 3- Configuration procedure.
 - 3.A Setting the computer's IP address.
 - 3.B Connection of the units to be programmed.
 - 3.C Setting the parameters of an Iplus device.
 - 3.C.1 Software general description.
 - 3.C.2 Add / Edit apartment units.
 - 3.C.3 Add / Edit porter units.
 - 3.C.4 Add / Edit IO devices.
 - 3.C.5 Add / Edit PABX gateway devices.
 - 3.C.6 Add / Edit entry units.
 - 3.D Defining time zone and language settings.
 - 3.E VPN connections.
- 4- Upgrade a device firmware.



1- INTRODUCTION

iPlus technology from Golmar is one of the simplest systems to configure. As each installation is different, there are some parameters that need to be set by the installer such as apartment codes and IP addresses to be used on the installation.

This manual teaches how to set the IP addresses and parameters of the devices and how to establish the relations in between them.

2- SYSTEM REQUIREMENTS

To run this software and proceed with the configuration of the monitors it is necessary:

- PC or Laptop running under Windows (XP, Vista, windows 7) with Ethernet port (RJ-45)
- PoE switch or a standard switch with PoE injector.

3- CONFIGURATION PROCEDURE

In general terms the steps to proceed programming the iPlus devices are as follows:

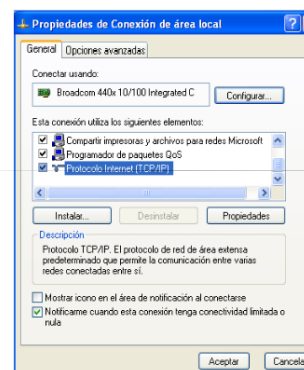
- a- Set the computer into the same IP range as the devices. (see section 3.A) and connect it to the PoE switch.
- b- Connect one iPlus device to the PoE switch.
- c- Set the parameters of the device that has been connected in the previous point.
- d- Upload the new device Configuration of the unit in order to change IP address from factory default to the selected one.
- e- Upgrade Firmware if required (otherwise jump to point f).
- f- Set up and Upload device configuration again if required. A star (*) in the Software advises when it is necessary.

Note: Factory default IP address for an IP device is 192.168.0.250

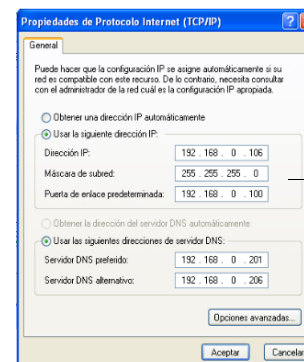
3.A - Setting the computer's IP address.

Connect the computer to a PoE or non PoE free port from the switch.
Follow the steps as described:

- 1- Enter into Control Panel from the Start menu.
- 2- Access into Network and internet settings.
- 3- Right Click on LAN Network connection.
- 4- Change TCP/IP properties



Windows Vista or 7 needs to change TCP/IP V4, not V6

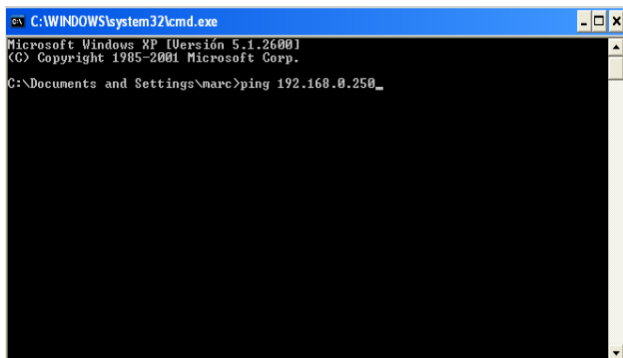


Change the IP address into the same IP range that iPlus devices. In the example we are using 192,168,0,106

Be aware that IP devices can be programmed under Any Private network class, A, B or C. Find out more information about Private Network classes at http://en.wikipedia.org/wiki/Private_network:

To check that the computer and the unit are in the same IP range follow the steps:

From the Start Menu click into 'Execute' and write "cmd". This will activate the system command window.

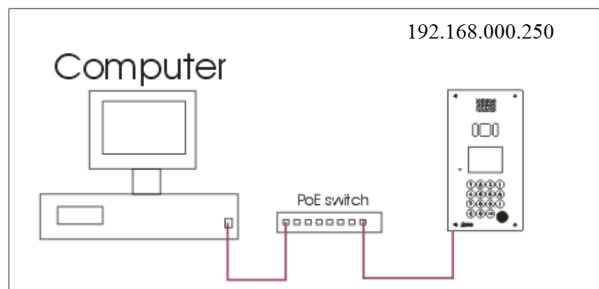


Ping the address of the monitor to check that the connection has been correctly established by writing "ping 192.168.0.250"

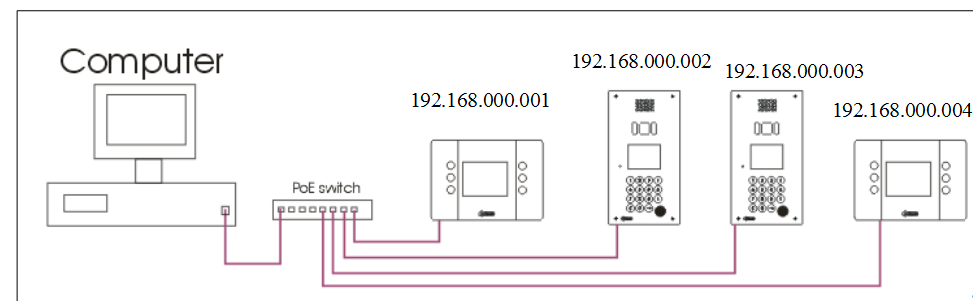
3.B- Connection of the units to be programmed

Before pressing the button to start uploading the new IP address to the device, it shall be ensured that the connection is done correctly to the switch.

- In case it is the first time to upload the configuration settings to the device follow picture 1.
- If the devices which are to be uploaded have already the IP address different than factory default , connect as per Picture 2. All units can be connected simultaneously because all them already have different IP addresses.



Picture 1



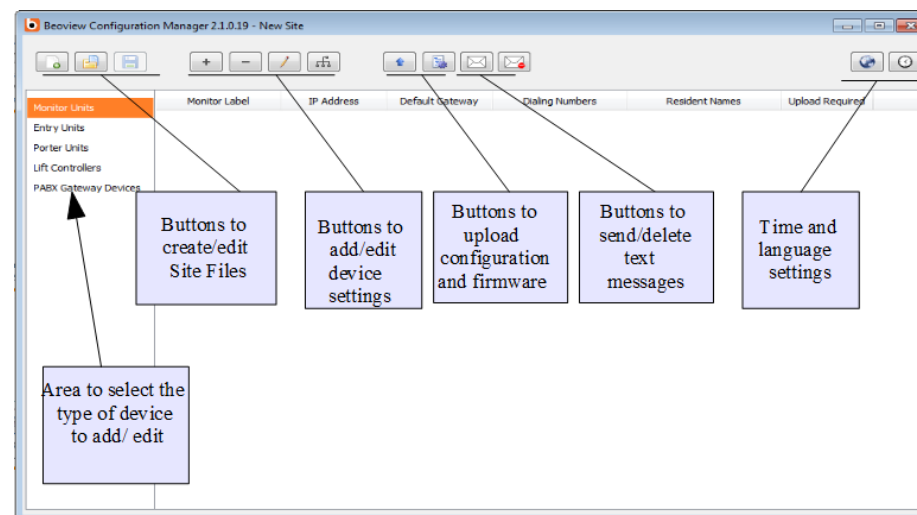
Picture 2

3.C - Setting the parameters of an IP device







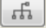






To set the parameters of the Iplus devices it is necessary to use Configuration Manager Software. Contact your local distributor to get a Soft copy of the software.

3.C.1 Software general description

The main buttons of the software are described in the bellow picture:




Buttons descriptions:

-  Create a new site file.
-  Open an existing site file.
-  Save the current site file.
-  Add an item (panel, monitor, Porter unit, I/O devices, PABX Gateway).
-  Delete an item (panel, monitor, Porter unit, I/O devices, PABX Gateway).
-  Edit unit parameters.
-  Edit mask and default gateway of the unit for VPN connection.
-  Change IP address of an unit and upload the configured settings.
-  Change firmware of a unit. (only to be operated by Golmar distributors).
-  Send text messages to a monitor or group of monitors.
-  Delete message at all the selected monitors connected to the system.
-  Define system language (available: SP, EN, DA, NO, DE, NL, FR, SV).
-  Set time zone or time server.

3.C.2 Add/Edit an apartment unit

To create an apartment unit and add it into the site file follow the bellow steps.

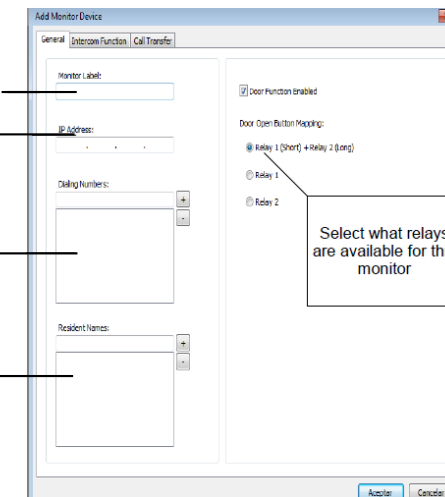
1 -Select Monitor Units at the left window. Add unit by clicking on the button . A form will appear on screen. Press OK when completed.

Monitor label: description of the monitor or identifying name.

IP Address: Each item must have a different IP address even if placed inside the same apartment.

Dial numbers which will call this monitor device.

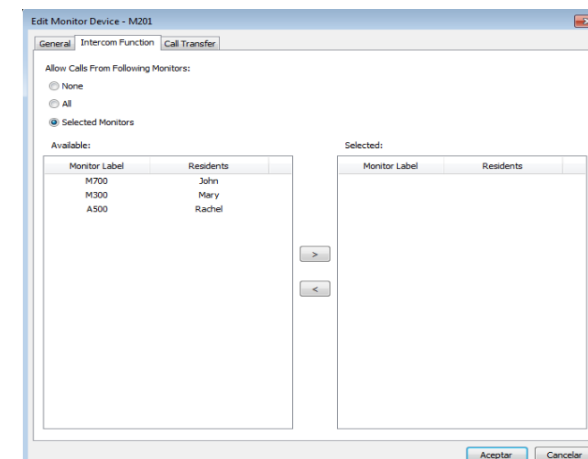
Resident Names that will appear on the TFT displayed at the 7402/IP panel and in the intercom list.



2- Establish the relations between monitors for the intercommunication. At this step the options are three:

- *None* of the monitors can intercommunicate with this monitor.
- *All* monitors can intercommunicate with this one.
- *Selected Monitors* can intercommunicate with this monitor. Allocate to the right the selected monitors from the available ones.

! It is recommended to leave this option at the end when all monitors have already been created.



3- Set Call transfer parameters.

Not yet available in FW 5.3.

4- Change IP address of the monitor.

Press the button . A window will appear on screen. Change the current IP address only if the monitor has an other IP address than 192,168,000,250 (i.e. The IP address has been previously changed and is not the factory default address). Then click on Upload.

! If it is the first time uploading the parameters to the unit, ensure that only this unit is connected to the switch as described in the point 3.B, Picture 1 or that no other units with same IP address are connected!

3.C.3 Add/Edit a Porter unit.

To create a Porter Unit and add it into the Site File follow the bellow steps.

1 -Select Porter Units at the left window of Configuration Manager. Add a unit by clicking on the button. A form will appear on screen to be filled in. Press OK when completed

Porter Label which will appear on the monitor's Porter list.

Porter IP address.

Porter Dial Names displayed at 7402/IP call list.

E100 linked to this Porter Unit. When porter Unit calls a Monitor Unit, the video streaming from this E100 IP address will be shown on screen

Available:

Monitor Label	Dial Number
A500	4
M300	3
M700	2

Allocated:

Monitor Label	Dial Number
M201	1

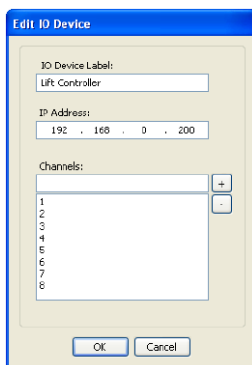
Available: Those apartments created in the previous point 3.C.2 not being yet allocated.

Allocated: Those apartments which dialling number will be available for being called from the Porter Unit.

3.C.4 Add / Edit IO Devices.

It can be added as many Relay boxes as required on a project. Select the IO Devices option at the left window of the configuration manager and click on the Add button .

This relay box is normally used for controlling the Lift, however can be used as remote lock control, avoiding cables that control the lock arriving inside the entry panel. IO Device Label will appear on the Entry Panel Edit tab. Simply edit the IP address and create a total of 8 Channels.

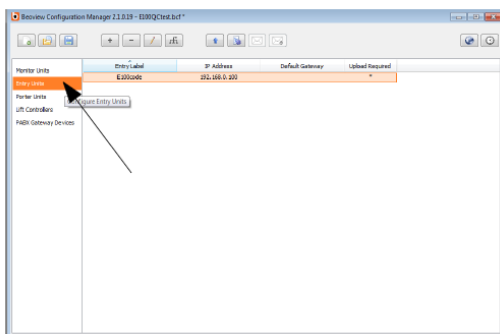


3.C.5 Add / Edit PABX Gateway Devices.

Such function has not yet been enabled on E100's FW-5.3

3.C.6 Add / Edit Entry units

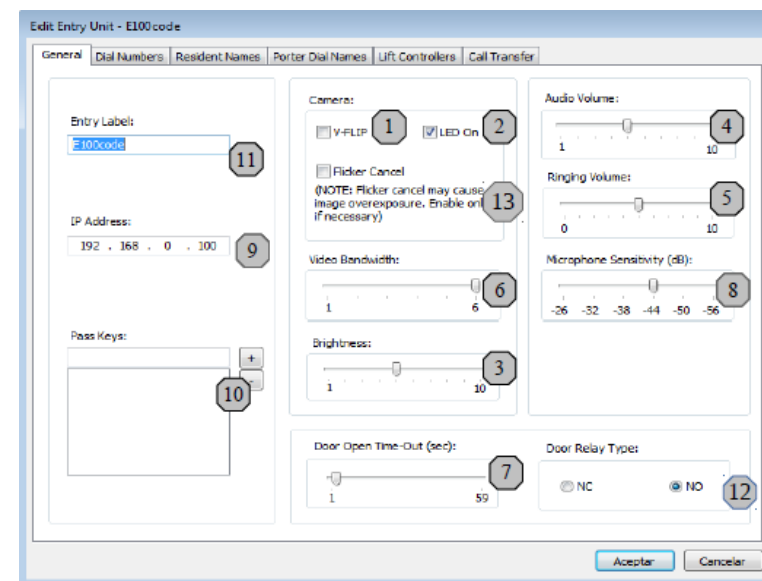
To create an Entry unit. Click on the area Entry units at the left side of the configuration manager window.



Click on the button . A form with 6 sections will appear on screen. Here below are described the different sections of this form. Full fill all required fields.

General Tab:

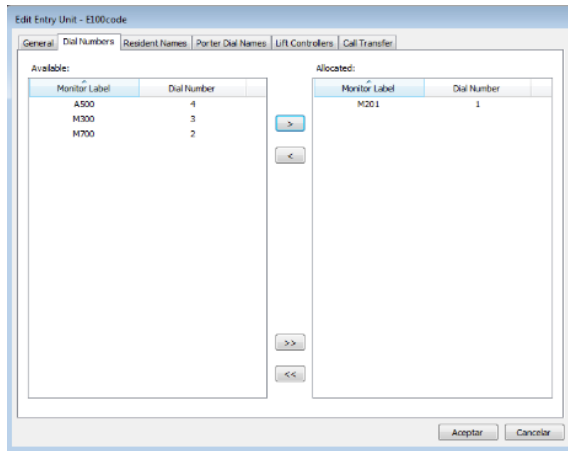
In this window is to be set the general parameters of the entry panel.



- 1- Flips the image 180 degrees on monitor screen.
- 2- Activation of E100 LED's on a call process or self activation.
- 3- Adjustment of TFT brightness on panels with TFT.
- 4- Adjustment of E100 loudspeaker volume.
- 5- Adjustment of E100 ring tone volume.
- 6- Video bandwidth Mb.
- 7- Door Open Time-Out. Adjustment of the relay time activation in seconds.
- 8- Microphone Sensitivity (dB).
- 9- Entry unit IP address.
- 10- Pass Keys. Pin codes, only for code panels. Up to 100 codes with 6 digits each.
- 11- Panel Label, identifies the panel during tracking process with a name.
- 12- Door Relay Type. NO= Normally open, NC = Normally closed.
- 13- Flicker Cancel. Cancels flickering from fluorescent tubes and other light sources.

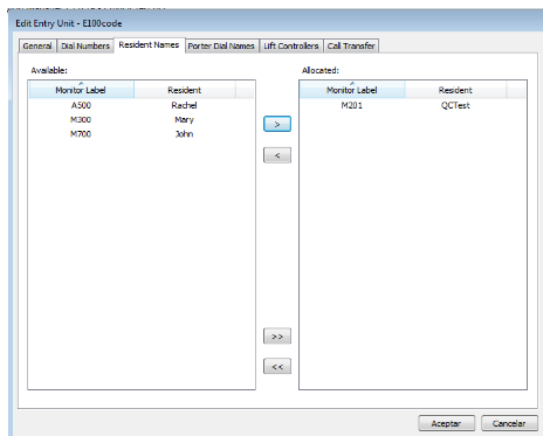
Dial Numbers:

This window shows a list with the available apartment units that have been previously introduced into the site file. Select the ones which might be able to call and transfer to the column in the right. Further apartment units can be added. This new apartment unit will appear automatically in the left column.



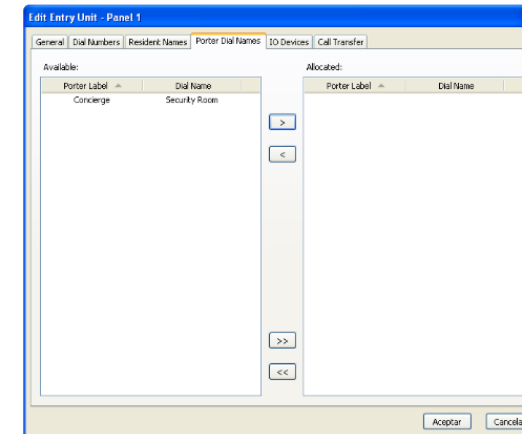
Resident Names:

In case of using 7402/IP panel it is important to select the Apartment Units labels to appear in the list. Visitors will be able to scroll the list and look for an apartment label to call instead of dialling directly the Dial Number.



Porter Dial Names:

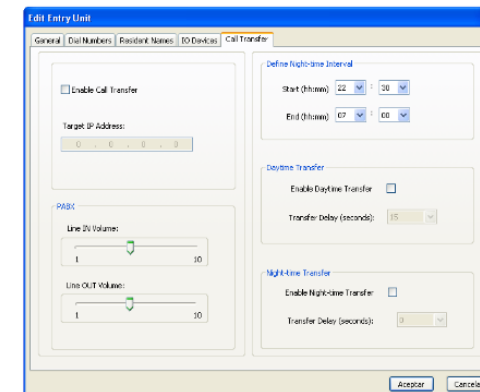
Porter units can be added to site file. E100 installed with code Panel Firmware can call directly to concierge stations by allocating them onto the right column. The Porter units shall have been created previously. See 3.C.3



Call Transfer:

Each Entry unit (E100) can be associated to an existing monitor or porter Unit in the installation.

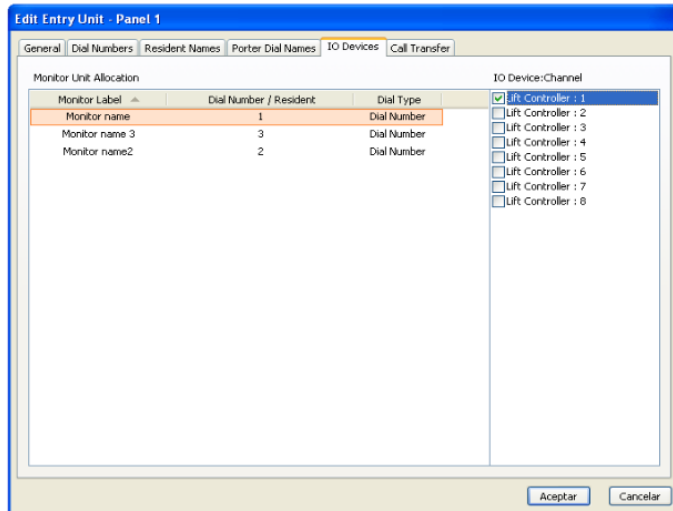
In case a monitor being called by a door entry panel (E100) doesn't answer or it is busy the call transfer feature will divert the call to a targeted IP monitor or Porter Unit. The call transfer can be set during night only by setting the time interval. In both situations a Transfer delay will be defined before the panel diverts the call to the targeted IP monitor. If the delay is set to 0 the call is automatically transferred.



IO Devices:

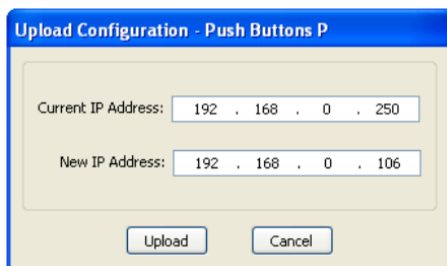
Each entry panel can be associated with relay boxes LCU-8/IP created in point 3.C.4. Those units are normally used as Lift Controller, however can be used also as remote lock function. Each monitor being called from the entry panel, that is being edited at this step, will be associated with one relay of the relay box (called Channels).

In the example bellow, monitor "Monitor name" is called by the entry panel "Panel1" If the lock release is activated, the relay no.1 from the relay box labeled as "Lift Controller" will be activated.



Uploading the configuration.

After setting all fields in the Edit Entry unit form, it is necessary to upload all this information to the E100.

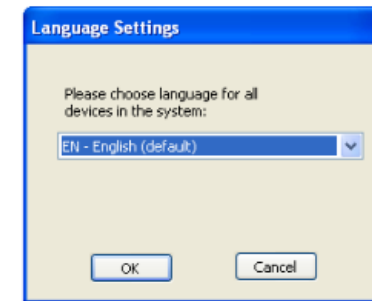


! If it is the first time uploading the configuration to the unit, ensure that only this unit is connected to the switch, as described in the point 3.B, Picture 1 or that no other units with same IP address are connected!

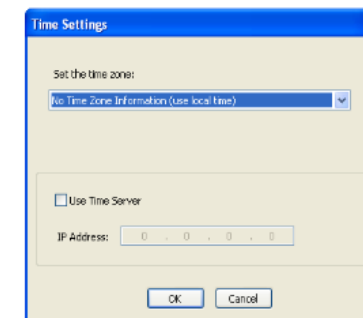
3.D Defining time zone and language settings

It is possible to set the language of the code entry panel 7402/IP. The available languages are:

- EN: English
- ES: Spanish
- DE: German
- NO: Norwegian
- SV: Swedish
- NL: Dutch
- FR: French

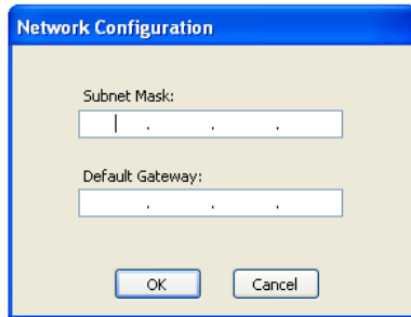


It is possible to set the time zone. After a power loss, E100 keeps the time by a period of time of 10 hours. After such period of time it is necessary to upload the configuration (as described on page 16) to set the correct time, unless we are using an existing time server from the network.



3.E VPN connections.

It can be defined for any of the created devices of the system the subnet mask and default gateway, in order to establish the communication through a VPN connection. The ports to be used for the communication which should be opened are 59700 – 59706. The devices allocated at different networks must be on different a range.

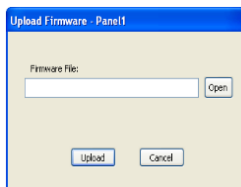


4- UPGRADE DEVICE FIRMWARE

Any of the units of the system can be Upgraded with a newer device Firmware if it is hardware compatible. This procedure must be done only by Golmar distributors as may cause guarantee termination.

! Do not upgrade the Device Firmware with an incompatible firmware or with a firmware that doesn't corresponds to that device (for example upload M300 FW over E100).
The bad operation of the system can terminate the guarantee term of the product, thus shall be done only by Golmar distributors.

Select the devices to be upgraded (more than one device can be selected if all them are the same unit type and have compatible hardware revisions). Click on the Upgrade Device Firmware button.



Select the Firmware file to be uploaded and click on the Upload button.

NOTES

